

10.1 - AC/DC MEASUREMENT

Analog and digital instruments:

- Input/output with standard 4 mm safety sockets
- Compact table top version or for vertical frame

- User Manual included
- High precision and reliability
- **also available for : 0,3kW, 3kW, 6kW**

Mod.4200-VA

- DC VoltAmmeter

- with eight separate meters for Dc
- DC voltmeters: 10–50–150–300V DC
- DC Ammeters: 0,5A-2,5A-5A-10A;



Mod.4201-VA

- AC VoltAmmeter

- with eight separate meters for Ac
- AC voltmeters: 30–100–250–500V AC
- AC Ammeters: 0,5A-2,5A -5A-10A ;



Mod.4206

- DC Power meter

- for measurements of power dc
- Max Voltage: 300V
- Max current: 5A



Mod.4200-V

- DC Voltmeter

- with three separate meters for Dc
- DC C: -50-150-300V DC



Mod.4201-V

- AC Voltmeter

- with three separate meters for Ac
- AC Voltmeter: - 500V



Mod.4207

- Power factor meter

- for measurements of power factor
- -0,5 ind.-1-0,5 cap.
- -Voltage max: 500V;
- -Current: 5A;



Mod.4200-A

- DC Ammeter

- with three separate ammeters for DC
- DC Ammeters: 2,5A - 5A-10A



Mod.4201-A

- AC Ammeter

- with three separate meters for Ac
- AC ammeters: - 5A



Mod.4208

- Power Meters AC

- Max Voltage: 500V
- Max current: 5A - 5A



Mod.4211

- Frequency Meter

- Range: 45-65Hz
- Max Voltage : 500V c.a.



Mod.4209B

- 1&3ph Multimeter

- 3 input Voltage L-L & L-N; 30÷400V
- 3 Current I1, I2, I3 ; range:0,1÷10A
- Active, reactive, apparent power,
- Frequency,
- Power factor meter



10.2 - AC/DC MEASUREMENT

Digital instruments:

- Input/output with standard 4 mm safety sockets
- Compact table top version or for vertical frame

- User Manual included
- High precision and reliability
- also available for : 0,3kW, 3kW, 6Kw

Mod.4200-VAD

-DC VoltAmmeter

- Digital voltmeter 0,1V÷300V DC
- Digital milliAmmeter 0,1mA÷3A DC
- Digital Ammeter 0,1A÷10A DC



Mod.4201-AD

-AC Ammeter

- with three separate meters for Ac
- AC ammeters: 0,02÷ 10A



Mod.4201-VD

- AC Voltmeter

- with three separate meters for Ac
- AC voltmeters: 2÷500V AC



Mod.4209M

-1-Ph Multimeter

- input voltage: 10÷ 290V AC
- input current: 0,05÷15A AC
- Active, reactive, apparent power, Frequency, Power factor meter.
- Accuracy: 0,5%
- Optional RS485/USB for PC



Mod.4209

-3-Ph Multimeter

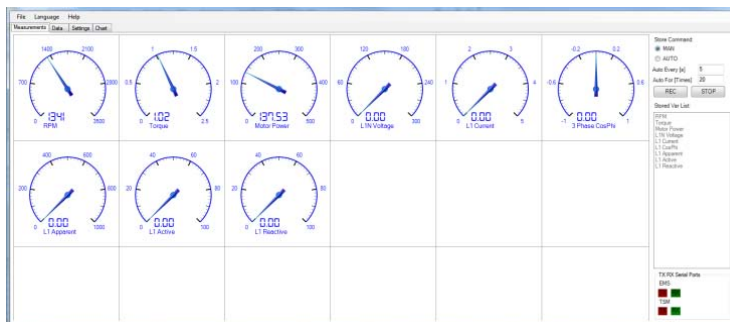
- 3 inputs for voltage 20÷ 500V AC
- 3 input for current 0,05÷15A AC
- Active, reactive, apparent power, Frequency, Power factor meter.
- Accuracy: 0,5%
- Optional RS485/USB for PC
- Optional software for PC Windows



Mod.4203-01

-3-Ph Multimeter

- 3 inputs for voltage 20÷ 600V AC
- 3 input for current 0,03÷10A AC
- Active, reactive, apparent power, Frequency, Power factor meter.
- Accuracy: 0,5%
- Optional RS485/USB for PC
- Optional software for PC Windows



Software for windows

Software for connecting to Windows computers for the visualization, recording and export of all data collected by the instruments.

Digital and analog display (on PC video) of all parameters (voltage, current, frequency, power factor, active power, reactive power, apparent power, etc.).

10.3 - AC/DC & MECHANICAL MEASUREMENT

Digital instruments:

- also available for : 1kW, 3kW, 6Kw
- Compact table top version or for vertical frame
- Accuracy: 0,5%

- Optional software for PC Windows with data recording and export
- Optional wired/wireless PC /Rs485 - Usb connection
- Power Supply : 230V ac

Mod.4203-02

-DC digital VA

- Voltmeter: 0,1÷300V DC
- Ammeter: 0,02÷10A DC
- Optional software for PC Win.



Mod.4203-03

-AC digital VA

- Voltmeter: 0,1÷600V AC
- Ammeter: 0,02÷10A AC
- Optional software for PC Win.



Mod.4203-04DC

-Digital VAW Meter DC

- input voltage: 1÷ 220V DC
- input current: 0,05÷10A DC
- VAW (Volt, Ampere, Watt)
- Accuracy: 0,5%



Mod.4203-07

-T&S digital meter

- Torque meter
- Speed meter
- with speed sensor and load-cell
- Optional software for PC Win.



Mod.4203-07AL

-T&S digital meter

- Torque meter with alarm
- Speed meter with alarm



Mod.4203/09-SW Software for Windows

Software for connecting to Windows computers for the visualization, recording and export of all data collected by the instruments.

Digital and analog display (on PC's video) of all parameters (voltage, current, DC power, speed, torque, mechanical power).

