

ELECTRICAL MEASUREMENT SYSTEM

Mod.3209

MEASURES – VISUALISATION

- Input: 3 Voltage L-L and L-N; range: 20÷500V;
- 3 Current I1, I2, I3; range: 0,02÷5A;
- Active, reactive & apparent power;
- Active, reactive & total energy counters;
- Frequency: 45 ÷ 65Hz;
- Power factor: +/- 1.00;

Measures are carried out in a real effective value of voltage, current, frequency, temperature and all the other calculated parameters are visualized on 3 digit displays. On displays it's possible to read at the same time each phase for selected parameter.

Immediate and simple reading in clear displays of 7 segment LED, dot-form LED for the identification of visualized parameter and only three button of intuitive functionality.

Applications

- Industry
- Technical Labs
- School/University

Included accessories

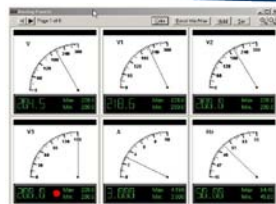
- Power cable



The digital multifunction meter Mod.3209 of the EMS series allow the measure of the main electrical parameters. The local visualization of more than 30 measured parameters is made with the usage of 4 red LED displays, in order to guarantee a reading clear and simultaneous of different measures. Intuitive selection of measures, that have to be visualized, completes a very simple frontal panel, but also supplies a lot of information.

Mod.3209 allows measuring inputs for three currents and three voltages in order to be adapted for their use also for single-phase networks, on three-phase networks with or without neutral. EMS are fully auto-range with the measuring unit indication in Kilo or Mega.

Model	Mod.3209	
Power supply	230Volt, ± 15% 50/60Hz	
MEASURES	V, A, COSFI, Hz, h, Temp, W, Var, VA, KWh, KVARh, KVAh	
VOLTAGE INPUTS	Range	20...500VAC L-L (10...290VAC L-N)
	Method	True RMS value
	Connection	Single-phase, two-phase, three-phase systems
CURRENT INPUTS	Range	0,02...5A
	Method	True RMS value
ACCURACY	Voltage	0,5%
	Current	0,5%
	Power	1%
	Frequency	0,5% (45 ÷ 65Hz)
	Active energy	Class 1
INSULATION	Voltage	3kVAC for 1 minute
AMBIENT CONDITION	Temperature	-10...+60°C
Weight	Kg	5
COMMUNICATION PORTS	RS485 serial interface	MODBUS-RTU max 19200 bps
ALARM PORT	2 digital outputs	



Software for windows

Software for connecting to Windows computers for the visualization, recording and export of all data collected by the instruments.

Digital and analog display (on PC video) of all 3-Phase line parameters (voltage, current, frequency, power factor, active power, reactive power, apparent power).