

10.1 - AC/DC MEASUREMENT

Analog and digital instruments:

- Input/output with standard 4 mm safety sockets
- Compact table top version or for vertical frame
- User Manual included
- High precision and reliability
- also available for : 1kW, 3kW, 6Kw

Mod.3200-VA

- DC VoltAmmeter

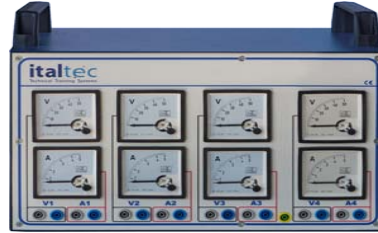
- with eight separate meters for Dc
- DC voltmeters: 10-50-150-300V DC
- DC Ammeters: 100-500mA -2,5A-5A;



Mod.3201-VA

- AC VoltAmmeter

- with eight separate meters for Ac
- AC voltmeters: 30-100-250-500V AC
- AC Ammeters: 100-500mA, 2,5A -5A ;



MOD.3206

- DC Power meter

- for measurements of dc power
- Max Voltage: 300V
- Max current: 2A



Mod.3200-V

- DC Voltmeter

- with three separate meters for Dc
- DC voltmeters: -50-150-300V DC



Mod.3201-V

- AC Voltmeter

- with three separate meters for Ac
- AC voltmeters: -500V



MOD.3207

- Power factor meter

- for measurements of power factor
- 0,5 ind.-1-0,5 cap.
- Voltage max: 500V; -Current: 2A;



Mod.3200-A

- DC Ammeter

- with three separate ammeters for DC
- DC Ammeters: 500mA 1A - 3A



Mod.3201-A

- AC Ammeter

- with three separate meters for Ac
- AC ammeters: - 2,5A



Mod.3208

- Power Meters AC

- Max Voltage: 500V
- Max current: 2A



Mod.3211

- Frequency Meter

- Range: 45-65Hz - Max Voltage : 500V c.a.



Mod.3209B

- 1&3ph digital Multimeter

- 3 input Voltage L-L & L-N; 30÷400V
- 3 Current I1, I2, I3 ; range:0,1÷5A
- Active, reactive, apparent power,
- Frequency,
- Power factor meter



10.2 - AC/DC MEASUREMENT

Digital instruments:

- Input/output with standard 4 mm safety sockets
- Compact table top version or for vertical frame
- User Manual included
- High precision and reliability
- also available for : 1kW, 3kW, 6kW

Mod.3200-VAD

-DC VoltAmmeter

- Digital voltmeter 0,1V÷300V DC
- Digital milliAmmeter 0,1mA÷3A DC
- Digital Ammeter 0,1A÷5A DC



Mod.3201-AD

-AC Ammeter

- with three separate meters for Ac
- AC ammeters: 0,02÷ 5A



Mod.3201-VD

- AC Voltmeter

- with three separate meters for Ac
- AC voltmeters: 2÷500V AC



Mod.3209M

-1-Ph Multimeter

- input voltage: 10÷ 290V AC
- input current: 0,02÷10A AC
- Active, reactive, apparent power, Frequency, Power factor meter.
- Accuracy: 0,5%
- Optional RS485/USB for PC



MOD.3209

-3-Ph Multimeter

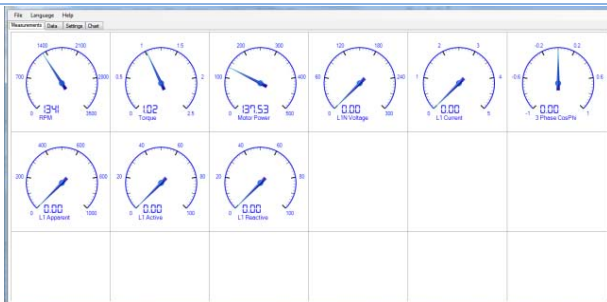
- 3 inputs for voltage 15÷ 500V AC
- 3 input for current 0,02÷10A AC
- Active, reactive, apparent power, Frequency, Power factor meter.
- Optional RS485/USB for PC
- Optional software for PC Windows



MOD.3203-01

-3-Ph Multimeter with graphic display

- 3 inputs for voltage 15÷ 600V AC
- 3 input for current 0,02÷5A AC
- Active, reactive, apparent power, Frequency, Power factor meter.
- Optional RS485/USB for PC Win
- Optional software for PC Windows



Software for windows

Software for connecting to Windows computers for the visualization, recording and export of all data collected by the instruments.

Digital and analog display (on PC video) of all parameters (voltage, current, frequency, power factor, active power, reactive power, apparent power, etc.).

10.3 - AC/DC & MECHANICAL MEASUREMENT

Digital instruments:

- also available for : 1kW, 3kW, 6Kw
- Compact table top version or for vertical frame
- Accuracy: 0,5%
- Optional software for PC Windows with data recording & export
- Optional wired or wireless PC/RS485 - Usb connection

Mod.3203-02

-DC digital VA

- Voltmeter 0,1÷300V DC
- Ammeter 0,01÷5A DC



Mod.3203-03

-AC digital VA

- Voltmeter 0,1÷600V AC
- Ammeter 0,01÷5A AC



Mod.3203-04DC

-Digital VAW Meter DC

- input voltage: 1÷ 220V DC
- input current: 0,03÷5A DC
- VAW (Volt, Ampere, Watt)
- Accuracy: 0,5%



Mod.3203-07

-TS digital meter

- Torque meter
- Speed meter



Mod.3203-07AL

-TS digital meter

- Torque meter with alarm
- Speed meter with alarm



Mod.3203/09-SW

Software for Windows

Software for connecting to Windows computers for the visualization, recording and export of all data collected by the instruments.

Digital and analog display (on PC's video) of all parameters (voltage, current, power, speed, torque, mechanical power).

